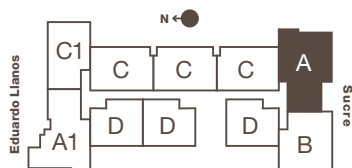
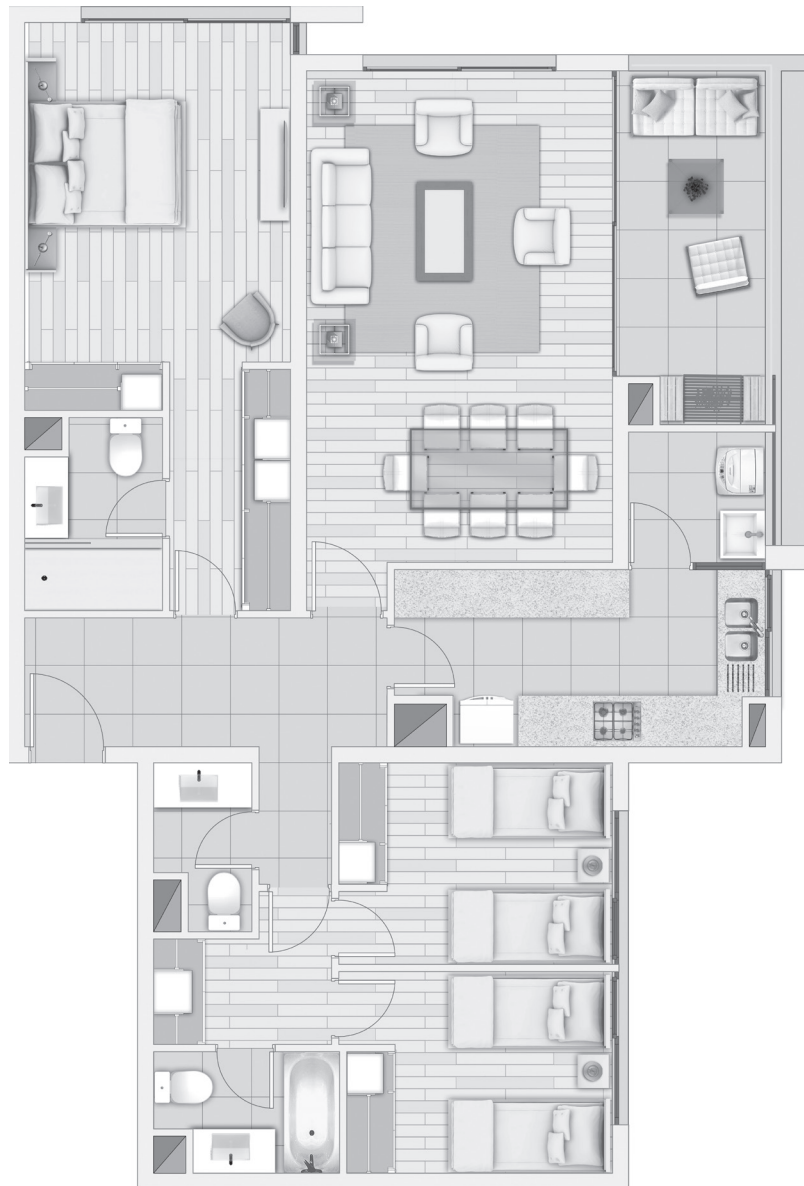


# BARRIO SUCRE



## DEPTO. TIPO A

Cocina cerrada / 3 Dormitorios + 3 Baños  
Orientación Sur Oriente

	Útil	Municipal
Sup. interior	104,17 m <sup>2</sup>	104,17 m <sup>2</sup>
Sup. terraza	8,64 m <sup>2</sup>	0,40 m <sup>2</sup>
Sup. logia	3,25 m <sup>2</sup>	0 m <sup>2</sup>
<b>Sup. total</b>	<b>116,06 m<sup>2</sup></b>	<b>104,57 m<sup>2</sup></b>