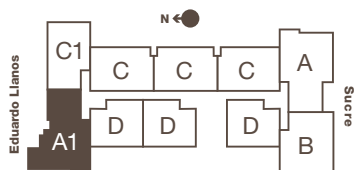
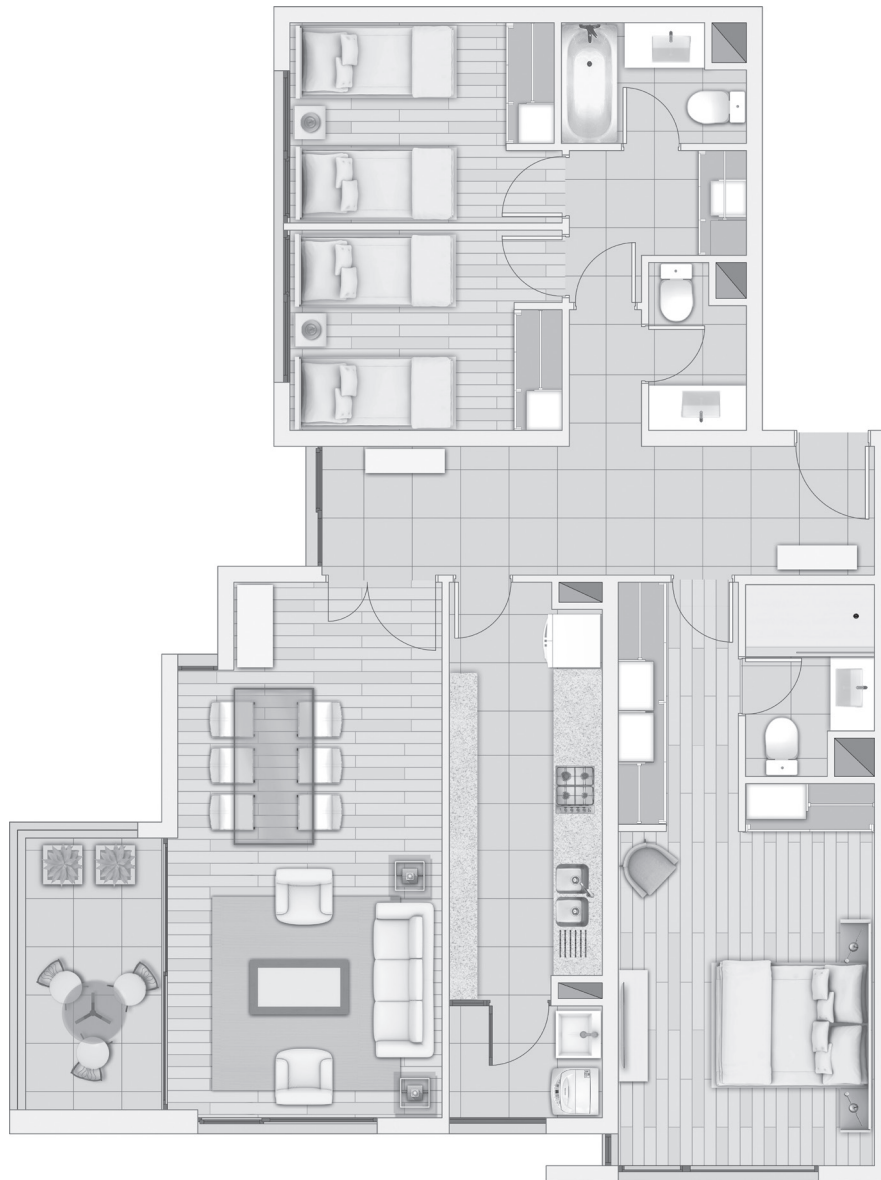


# BARRIO SUCRE



## DEPTO. TIPO A1

Cocina cerrada / 3 Dormitorios + 3 Baños  
Orientación Nor Poniente

	Útil	Municipal
Sup. interior	105,10 m <sup>2</sup>	105,10 m <sup>2</sup>
Sup. terraza	7,41 m <sup>2</sup>	0,59 m <sup>2</sup>
Sup. logia	3,06 m <sup>2</sup>	2,32 m <sup>2</sup>
<b>Sup. total</b>	<b>115,57 m<sup>2</sup></b>	<b>108,01 m<sup>2</sup></b>